



Beaconfield Road, Epping

Asking Price £550,000



MILLERS
ESTATE AGENTS

* POTENTIAL TO EXTEND STP * CLOSE TO LOCAL SCHOOLS * WALKING DISTANCE OF HIGH STREET *
* OFF STREET PARKING * GROUND FLOOR WC * DOUBLE GLAZED CONSERVATORY *

Nestled on the charming Beaconfield Road in Epping, this delightful semi-detached house presents an excellent opportunity for families and professionals alike. With three well-proportioned bedrooms, this home offers ample space for comfortable living. The property features a welcoming reception room, perfect for entertaining guests or enjoying quiet evenings in.

One of the standout features of this residence is its convenient location. Just a short stroll away, you will find the vibrant Epping High Street, brimming with shops, cafes, and local amenities. For those who commute, Epping Station is a mere 0.7 miles from your doorstep, providing easy access to central London and beyond.

The property also boasts parking for two vehicles, a valuable asset in this sought-after area. Families will appreciate the proximity to local schools, making the morning school run a breeze. Additionally, there is potential to extend the property, allowing you to tailor the home to your specific needs and preferences.

This semi-detached house on Beaconfield Road is not just a place to live; it is a wonderful opportunity to create a home in a thriving community. With its ideal location and potential for growth, this property is sure to attract interest. Do not miss the chance to make it your own.





GROUND FLOOR

Porch

2'4" x 5'6" (0.71m x 1.68m)

Cloakroom Utility

6'3" x 5'0" (1.91m x 1.52m)

Living Room

15'2" x 11'1" (4.62m x 3.38m)

Dining Room

6'9" x 10'4" (2.05m x 3.15m)

Kitchen

10'2" x 8'6" (3.11m x 2.59m)

Conservatory

9'11" x 9'9" (3.02m x 2.97m)



FIRST FLOOR

Bedroom One

11'0" x 9'7" (3.35m x 2.92m)

Bedroom Two

8'11" x 9'8" (2.72m x 2.95m)

Bedroom Three

7'10" x 6'8" (2.39m x 2.03m)

Bathroom

7'8" x 5'6" (2.34m x 1.68m)



EXTERIOR

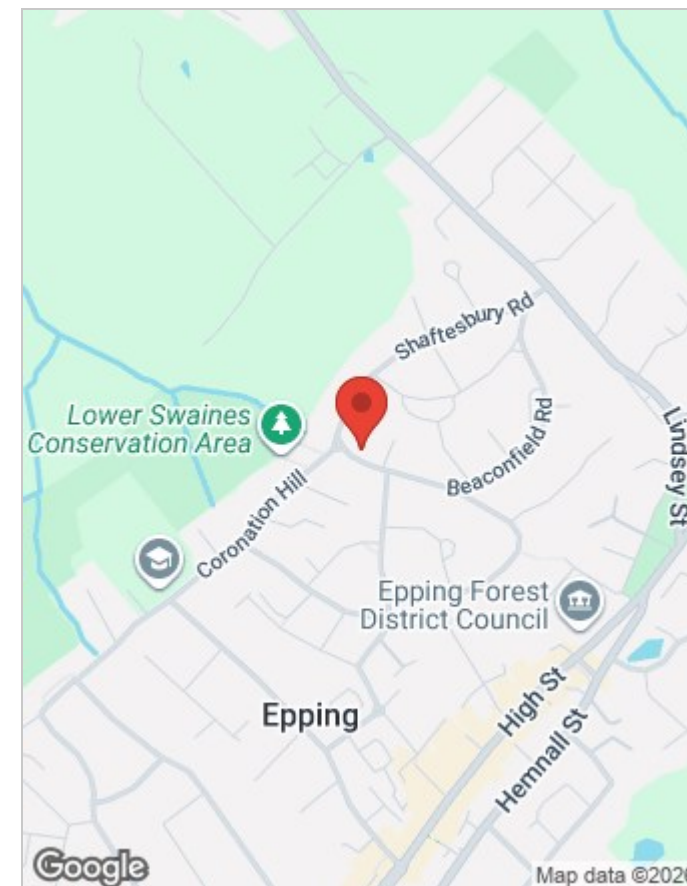
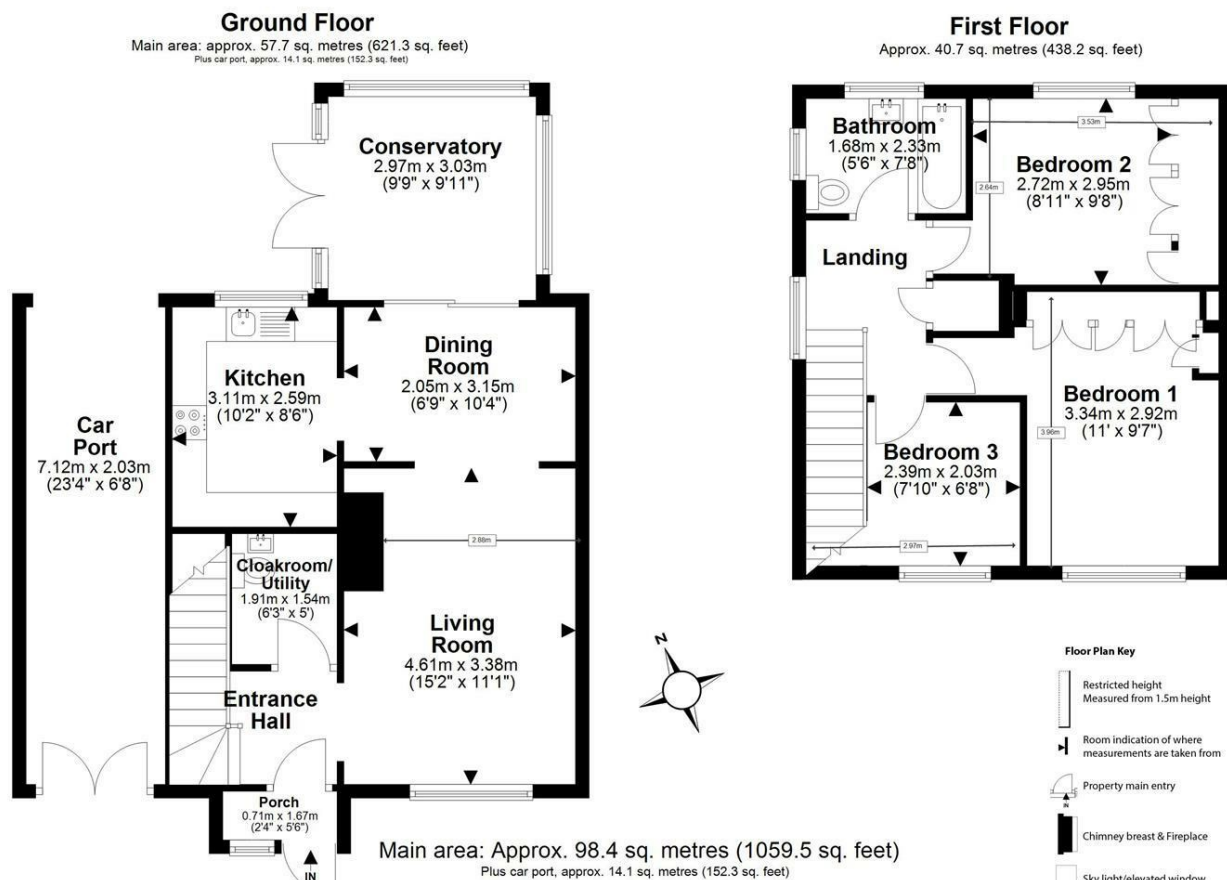
Rear Garden

49'0" x 24'0" (14.94m x 7.32m)

Car Port

23'4" x 6'8" (7.11m x 2.03m)





Energy Efficiency Rating			Environmental Impact (CO ₂) Rating		
	Current	Potential		Current	Potential
Very energy efficient - lower running costs			Very environmentally friendly - lower CO ₂ emissions		
(92 plus) A			(92 plus) A		
(81-91) B			(81-91) B		
(69-80) C			(69-80) C		
(55-68) D			(55-68) D		
(39-54) E			(39-54) E		
(21-38) F			(21-38) F		
(1-20) G			(1-20) G		
Not energy efficient - higher running costs			Not environmentally friendly - higher CO ₂ emissions		
England & Wales	EU Directive 2002/91/EC		England & Wales	EU Directive 2002/91/EC	

Viewing

Please contact our Millers Office on 01992 560555
if you wish to arrange a viewing appointment for this property or require further information.

These particulars, whilst believed to be accurate are set out as a general outline only for guidance and do not constitute any part of an offer or contract. Intending purchasers should not rely on them as statements of representation of fact, but must satisfy themselves by inspection or otherwise as to their accuracy. No person in this firms employment has the authority to make or give any representation or warranty in respect of the property.